



Galle Dialogue 2019

International Maritime Conference - Sri Lanka

'Refining Mindset to Address Transnational Maritime Threats: A Review of the Decade'



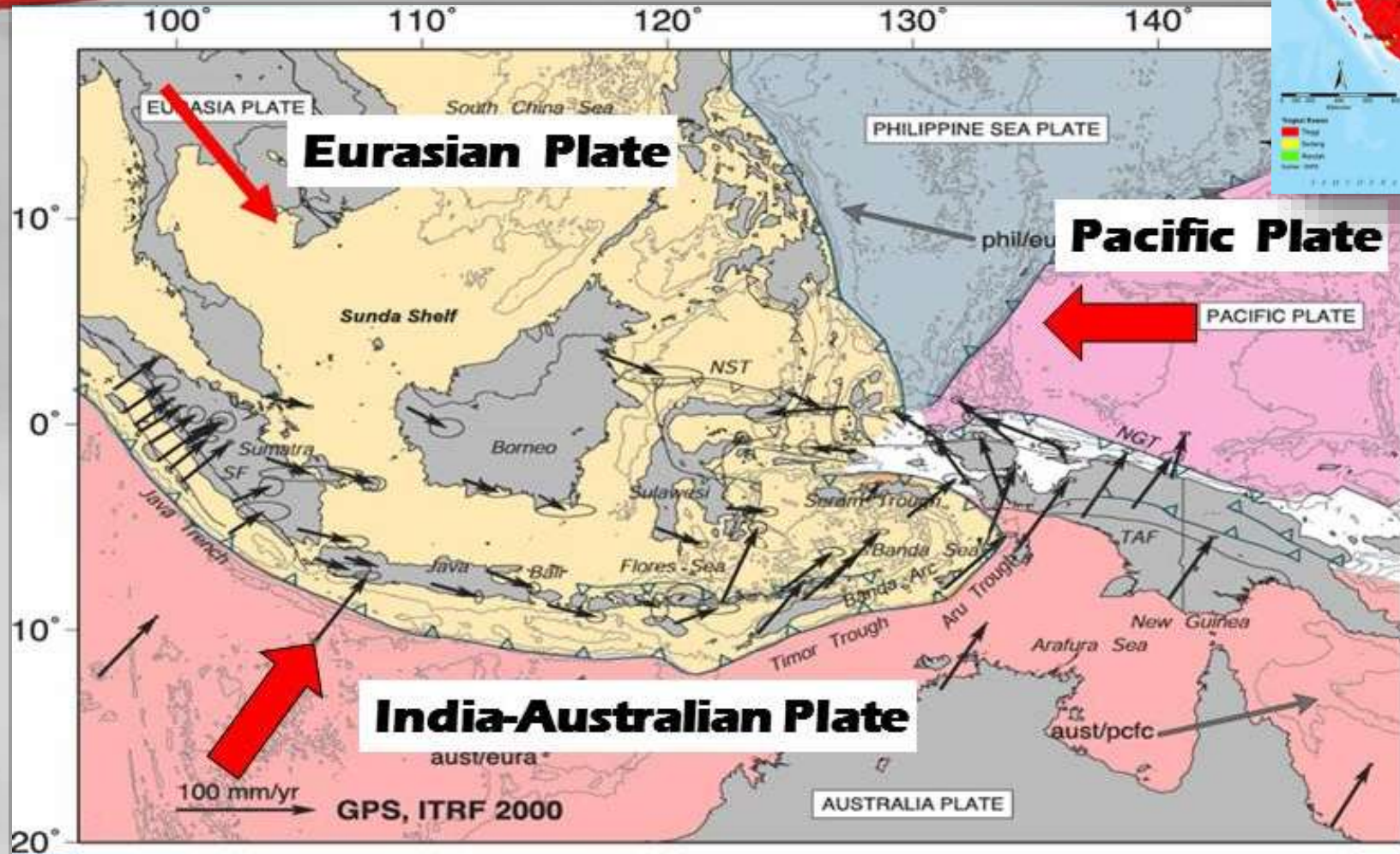
Maritime Disasters and HADR: Indonesian Navy's Commitments in Responding to Natural and Man-Made Disaster in the Last Decade

First Admiral Tatit Eko W., S.E., M. Tr (Han)

Vice Commander, Indonesian Naval Command and Staff College



Background



The territory of Indonesia is located at the confluence of three active tectonic plates namely the Indo-Australian Plate in the south, the Eurasian Plate in the north and the Pacific Plate in the east





Background

1. GEOLOGICAL FACTORS



2. HYDROMETEOROLOGY FACTORS



3. BIOLOGICAL FACTORS

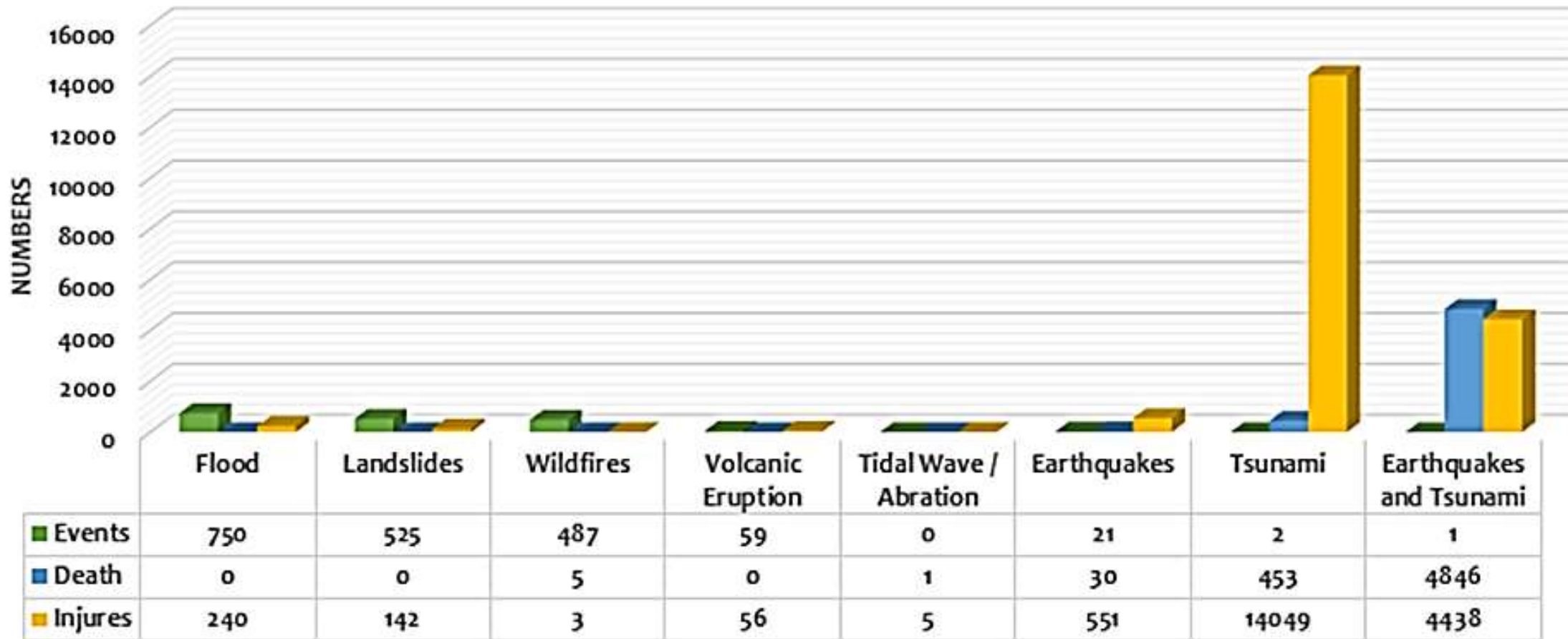
4. TECHNOLOGICAL FACTORS





Background

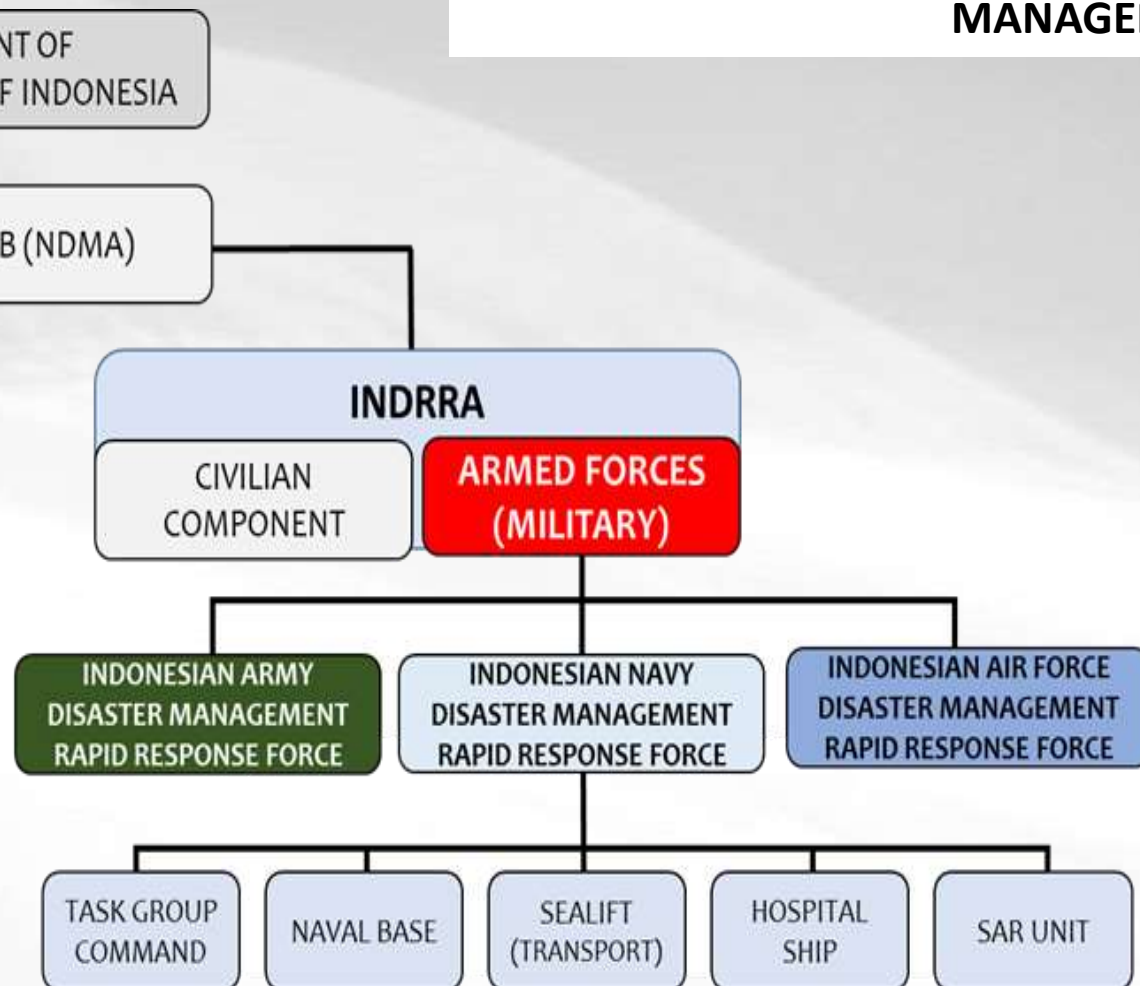
Disasters in the Last Decade





Background

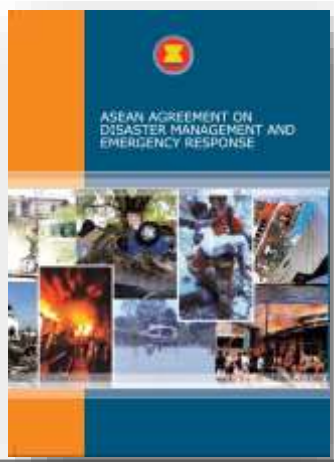
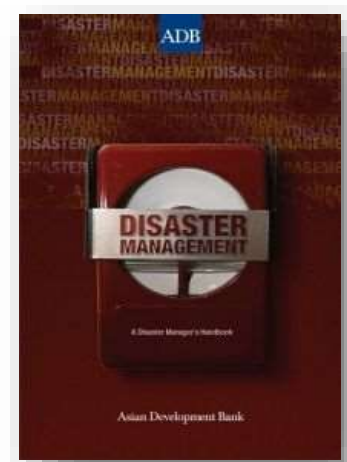
THESE FIVE RATIONALES AUTHORISE THE IAF LEGITIMACY TO CARRY OUT DISASTER MANAGEMENT TASKS IN THE COORDINATION OF THE NATIONAL DISASTER MANAGEMENT AUTHORITY (NDMA)



1. **DISASTER MANAGEMENT AS A FORM OF THE OPERATIONS OTHER THAN WAR.**
2. **THE NAVY HAS A STRONG INSTITUTIONAL SYSTEM.**
3. **THE NAVY HAS PERSONNEL OR HUMAN RESOURCES WHO ARE READY AND SUPERIOR IN PHYSICAL AND MENTAL TO DEAL WITH EMERGENCY TASKS.**
4. **THE INDONESIAN NAVY HAS A HIGH-QUALITY REPARATION AND MAINTENANCE SYSTEM.**
5. **THE INDONESIAN NAVY HAS THE APPROPRIATE EQUIPMENT FOR EMERGENCY ASSIGNMENTS**

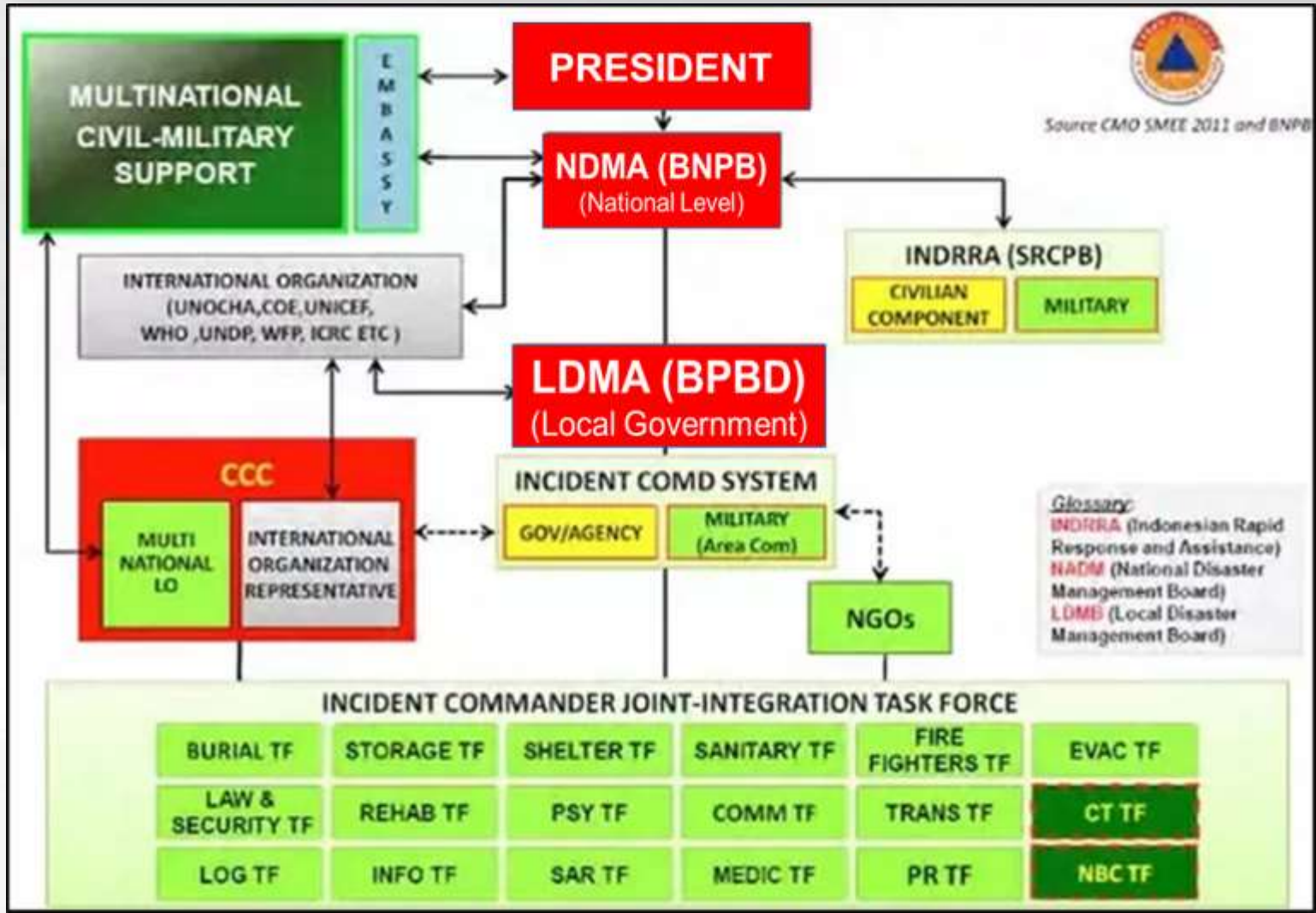


Academic Perspectives





Disaster Management in Indonesia



Glossary

INDRRA

- Indonesian Rapid Response and Assistance

NDMA

- National Disaster Management Authority

LDMA

- Local Disaster Management Authority

MILITARY (TNI)

- Indonesian Armed Forces (Army, Navy, Air Force) Disaster Management Rapid Response Force



THE RECOVERY PHASE

Carried out based on the operational plan

THE EMERGENCY RESPONSE PHASE

Carried out based on operational Plan which is the Operational of the Emergency Plan

04



03

01

PRE-DISASTER PHASE IN A SITUATION WHERE NO DISASTER OCCURS

Disaster Management Plan is prepared. (Mitigation Plan)

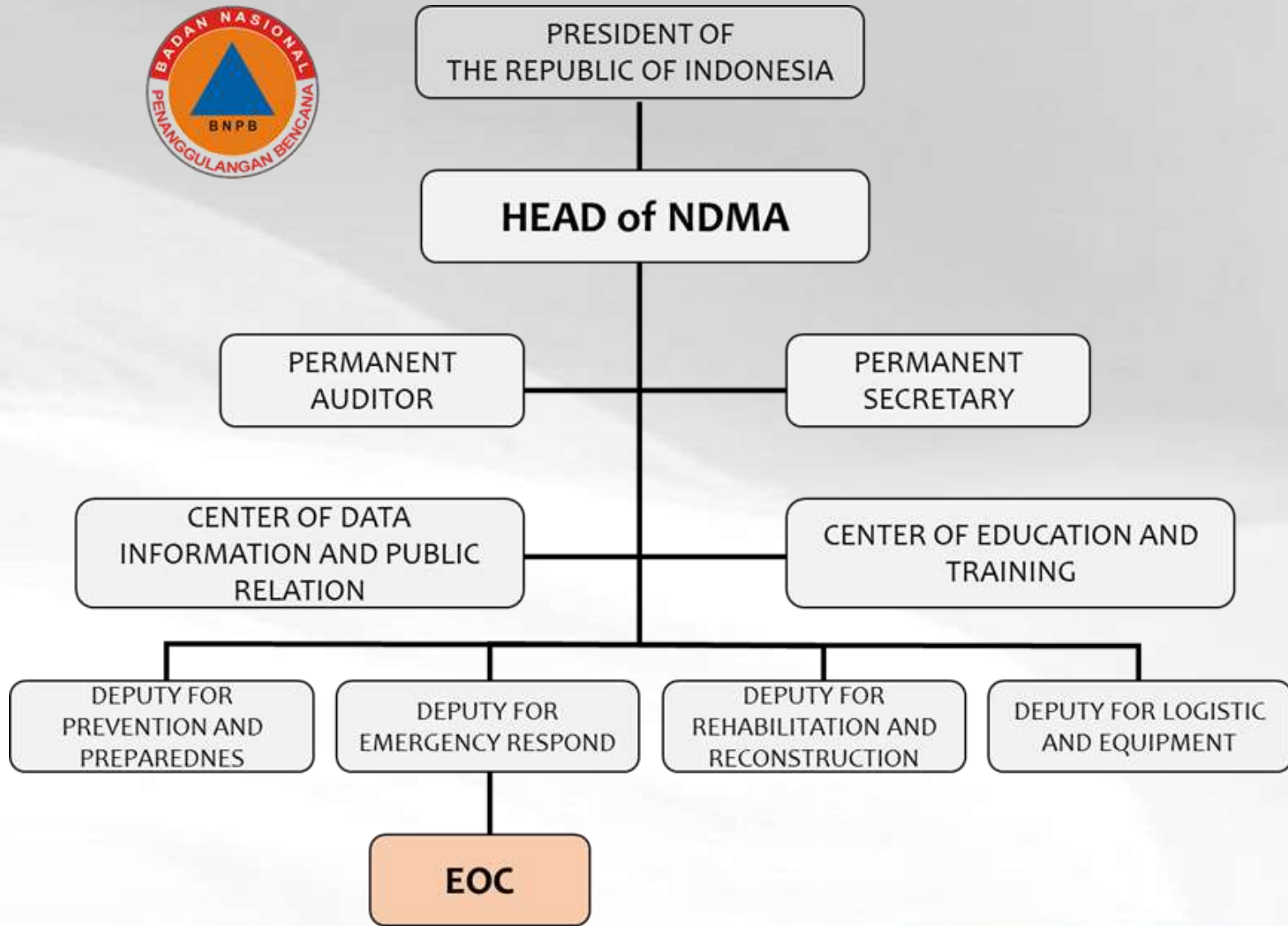
PRE-DISASTER PHASE IN THE STAGE OF A POTENTIAL DISASTER PHASE

Preparedness Plan is set up to deal with an emergency based (Contingency Plan)

02



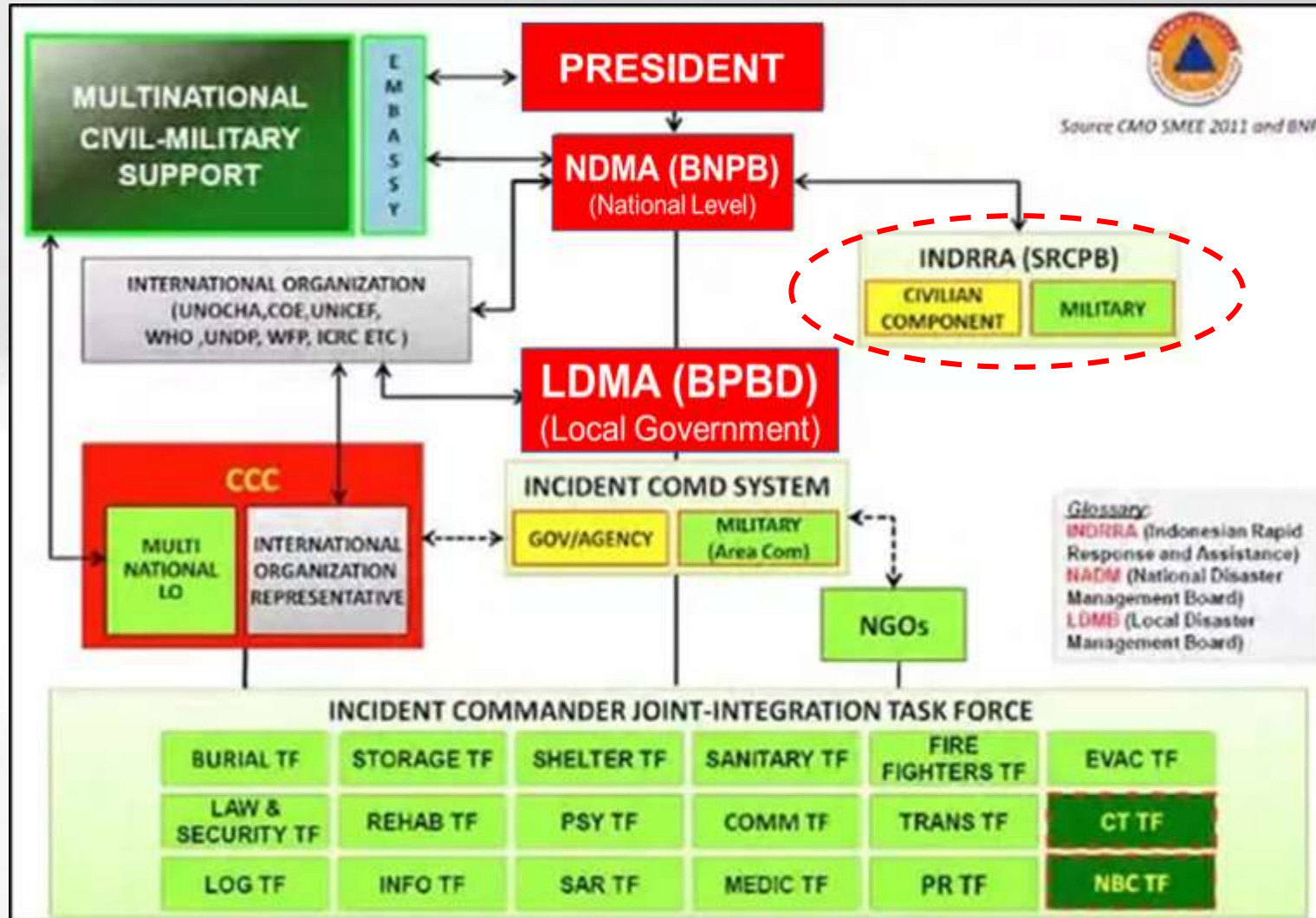
Organizational Chart of National Disaster Management Authority





Coordination Mechanism of Disaster Management

NDMA ↔ LDMA



INDRRA

- Indonesian Rapid Response and Assistance

NDMA

- National Disaster Management Authority

LDMA

- Local Disaster Management Authority

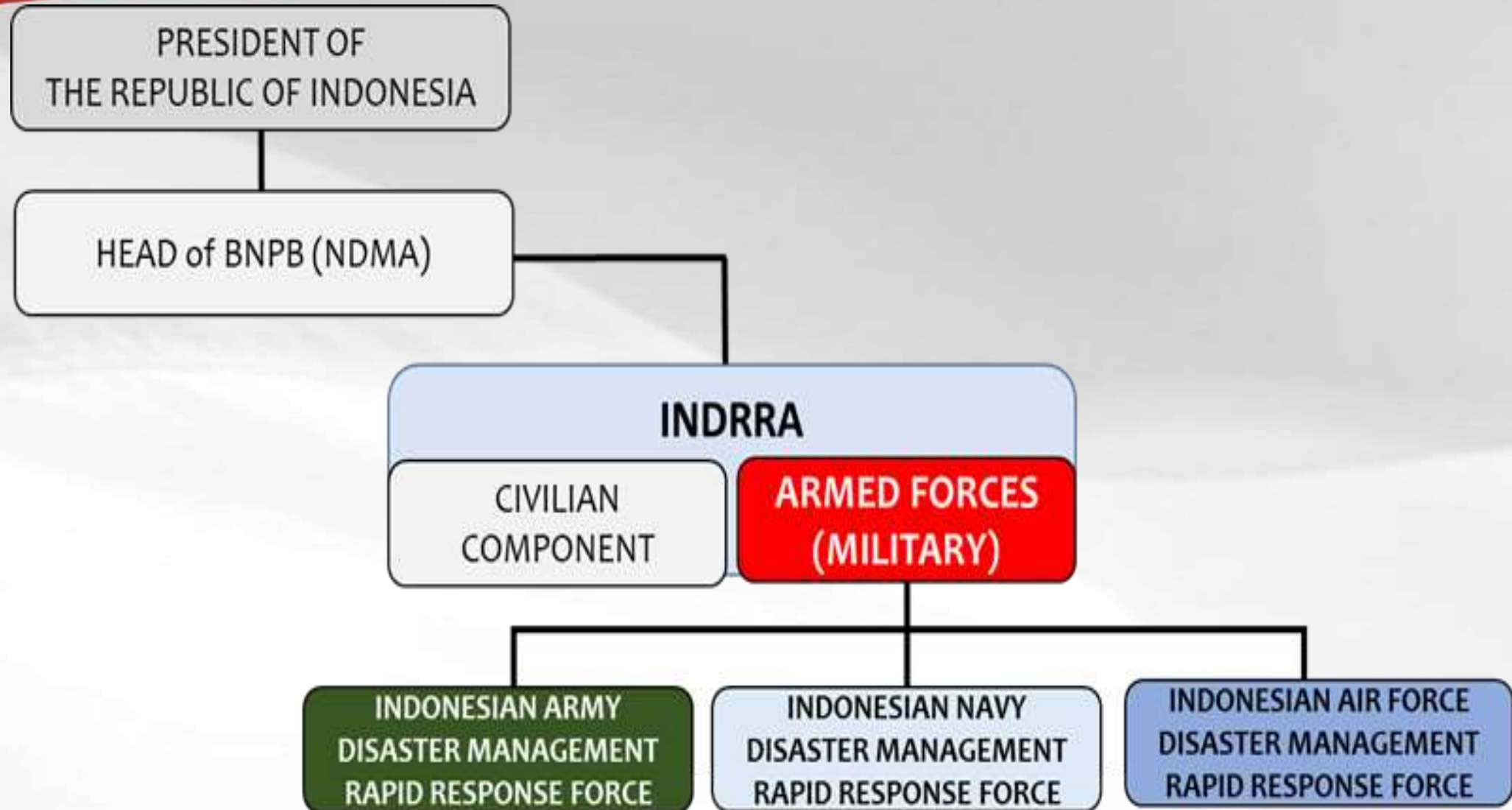
MILITARY (TNI)

- Indonesian Armed Forces (Army, Navy, Air Force) Disaster Management Rapid Response Force



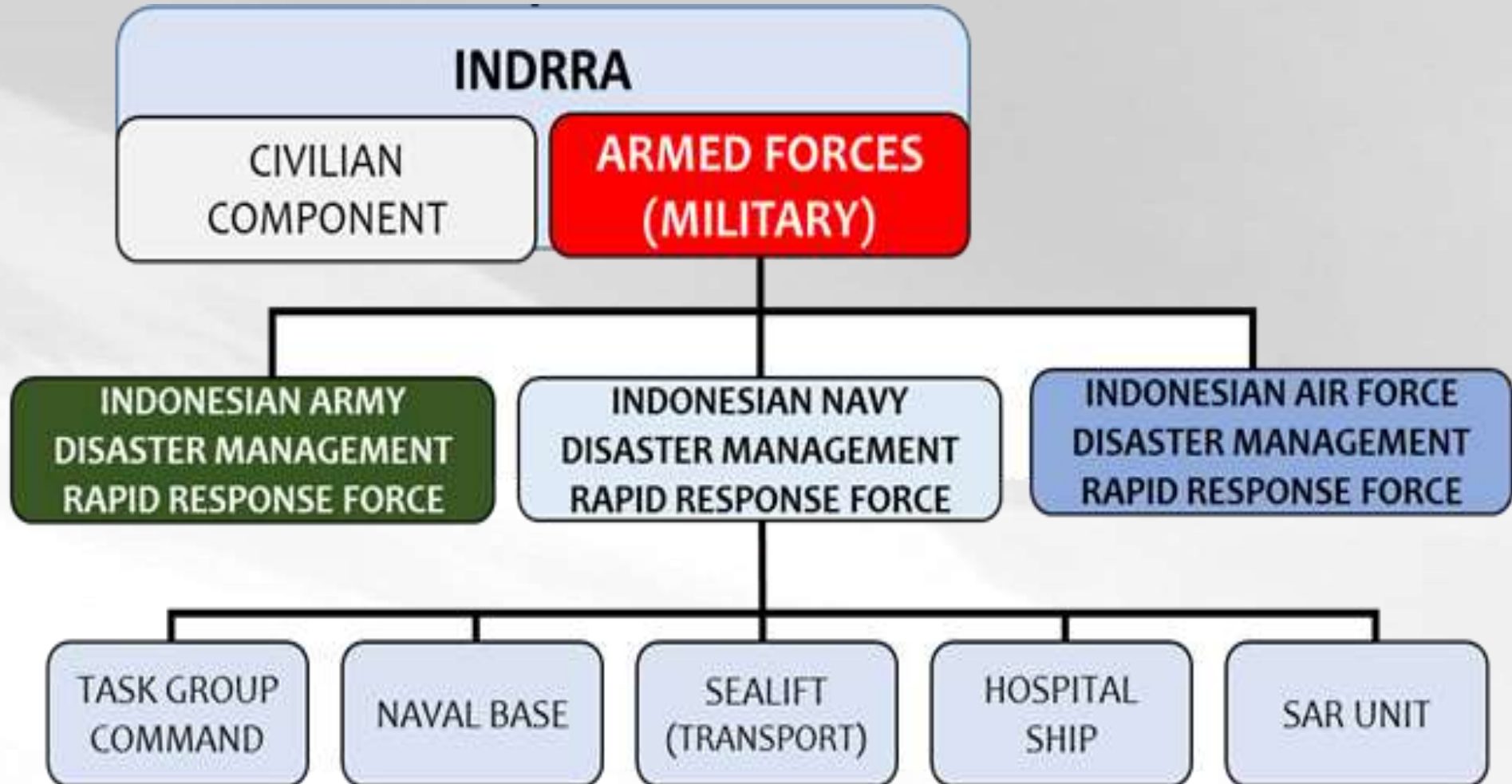


Indonesian Navy Disaster Management Rapid Response Force





Indonesian Navy Disaster Management Rapid Response Force





Indonesian Navy's HADR Capability

1



The Indonesian NAVY has a **LEGAL BASIS** as form of MOOTW

2



STRONG INSTITUTIONAL SYSTEM with organizational culture

3



Has **PERSONNELS** who are ready and superior physically and mentally to deal with emergency tasks

4



Has a superior reparation and **MAINTENANCE SYSTEM**

5



Has the **APPROPRIATE EQUIPMENT** for emergency tasks both in terms of facilities and infrastructure





The roles of Indonesian Warship (KRI)



KRI DR. SOEHARSO – KRI SEMARANG



- ☐ Providing relief goods, food, and medicines
TRANSPORTATION.
- ☐ Search and Rescue (SAR).
- ☐ Medical Service Supports
 - ✓ Facilities and Infrastructure
 - ✓ Human Resources
 - ✓ Medical Capabilities





Medical Support Team in Hospital Ship

MEDICAL CAPABILITIES (2 HOSPITAL SHIPS):



1. EMERGENCY MEDICAL RESPONSE AND SURGICAL SERVICES
2. SERVICES OF GENERAL PRACTITIONERS, DENTISTS AND SPECIALIST DOCTORS;
3. MINOR AND MAJOR SURGICAL CASE OPERATIONS AS WELL AS MIDWIFERY; INTENSIVE CARE UNIT (ICU);
4. DETACHING FIELD HOSPITALS;
5. RADIOLOGICAL AND LABORATORY EXAMINATIONS





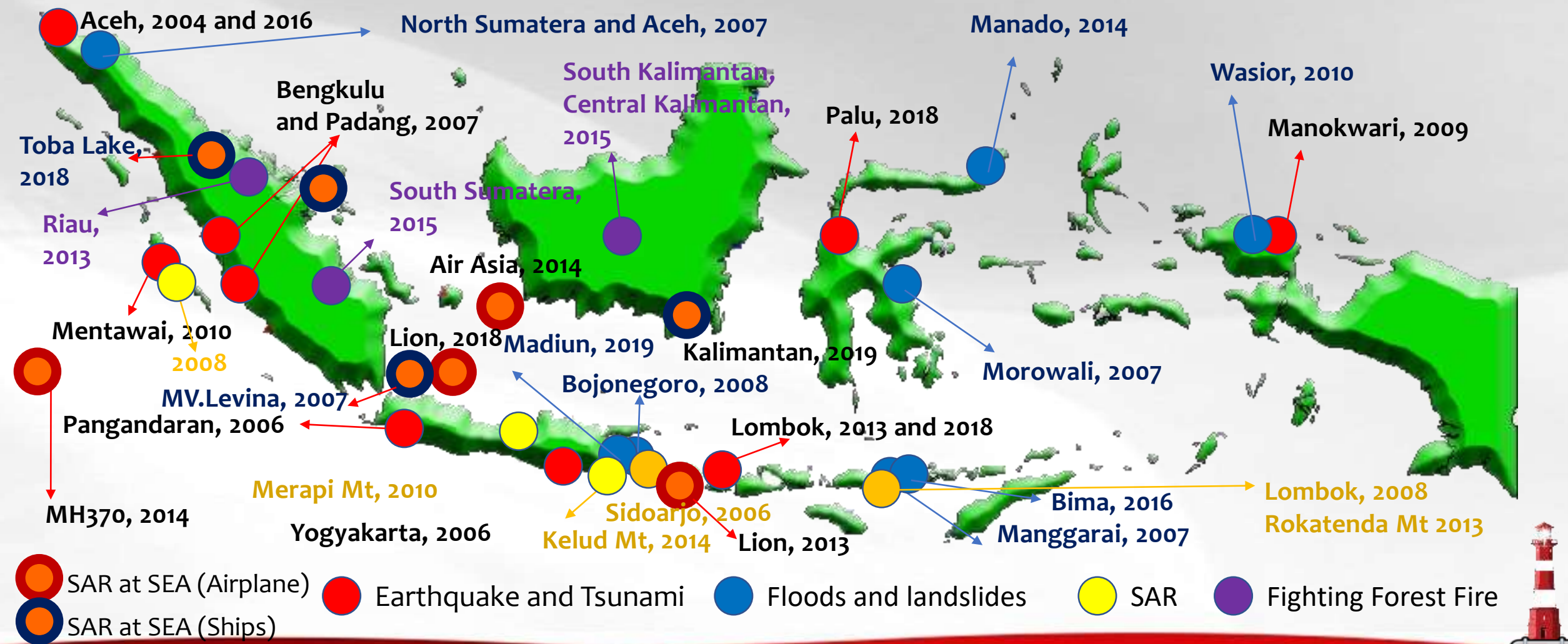
Indonesian Navy's Commitments: Disaster Management Activities in the Last Decade

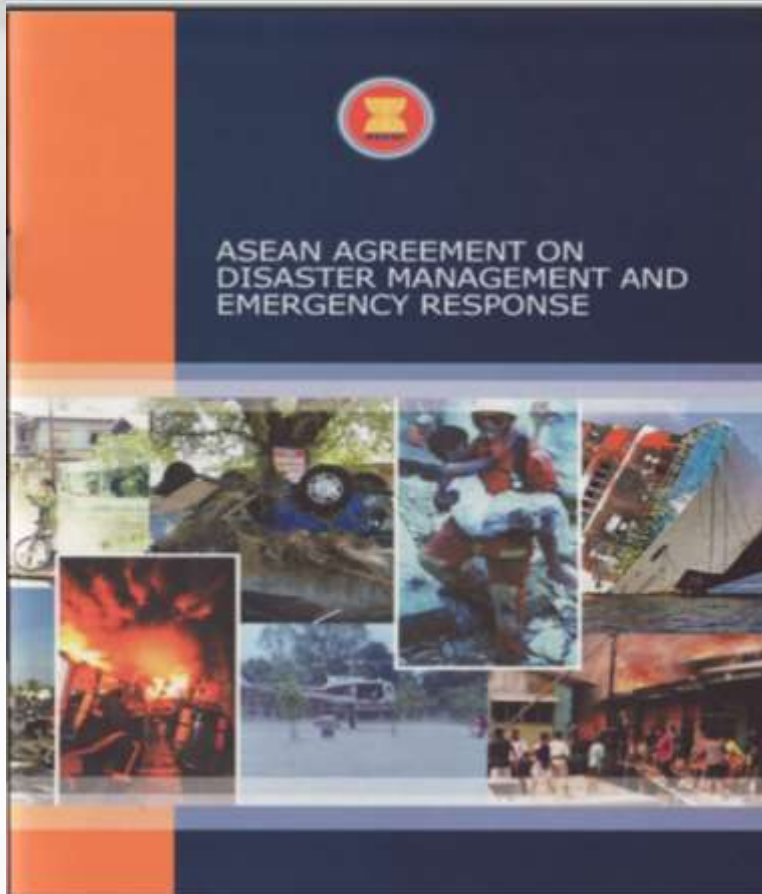




Indonesian Navy: Natural Disaster Management Activities in the Last Decade

NATIONAL





The Indonesian Armed Force participated in quite a number of HADR operations in extra-territorial regions such as the ASEAN region

AADMER is an agreement to carry out disaster management at the ASEAN regional level in a joint, integrated and comprehensive manner because it covers all aspects of the disaster management cycle





Indonesian NAVY as a Part of TNI (Indonesian Armed Forces) in Responding HADR in International

INTERNATIONAL



Fiji: **Public Facilities and Schools**



Humanitarian Assistance to Rohingya,
Myanmar

Food



Super Typhoon Haiyan, the Philippines in 2013.
75 tons of Logistics



SAR: Airplane Crashes



Lion Air, 2013



Air Asia, 2014



Malaysia MH370, 2014



Lion Air, 2018



SAR: Ship's Accidents



MV. Levina I, Java Sea, 2007



MV. Dumai Express, Riau, 2009



MV. Sinar Bangun, Toba Lake, 2018



MV. Pieces, South Kalimantan, 2019



Earthquake and Tsunami



Aceh 2004



Jogjakarta 2006



Lombok 2013



Padang 2007



Banten 2018



Palu 2018



Floods and landslides



Morowali 2007



Manggarai 2007



Manado 2014



Manokwari 2010



Bima 2016



NAD 2007



SAR





Fighting Forest Fire





Conclusion

✓ The implementation of HADR in Indonesia is carried out by the central government (NDMA) and regional governments (LDMA). In carrying out their duties, NDMA and LDMA involve the TNI together with the civil component in the Disaster Management Rapid Reaction Unit.

✓ The central government, local government and the Armed Force have involved significant resources to raise awareness about potential vulnerability to natural hazards.

✓ HADR has a dominant civil function, but humanitarian principles also stipulate that all available resources, including military assets





Thank You

